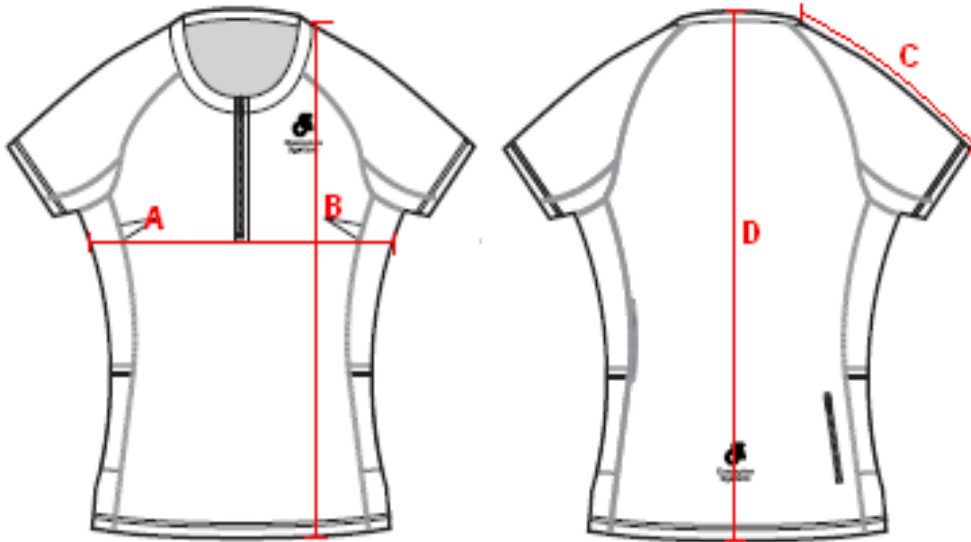


## ***Performance Zip Top Women's Cut***



If you are unsure which size to order, try measuring a similar garment you already own that fit you well, and compare those measurements to this size chart. Lay the garment on a flat surface and use the above guide to measure.

**Note:** All measurements are approximate.

Size	A (Chest)	B (Front Length)	C (S/S Length)	D (Back Length)
XS	16 1/2	21 1/2	9 3/4	21
S	17 1/2	22 1/2	10 1/8	22
M	18 1/2	23 1/2	10 1/2	23
L	19 1/2	24 1/2	10 7/8	24
XL	20 1/2	25 1/2	11 1/4	25
2XL	22	26 1/2	11 3/4	26
3XL	23 1/2	27 1/2	12 1/4	27
4XL	25	28 1/2	12 3/4	28