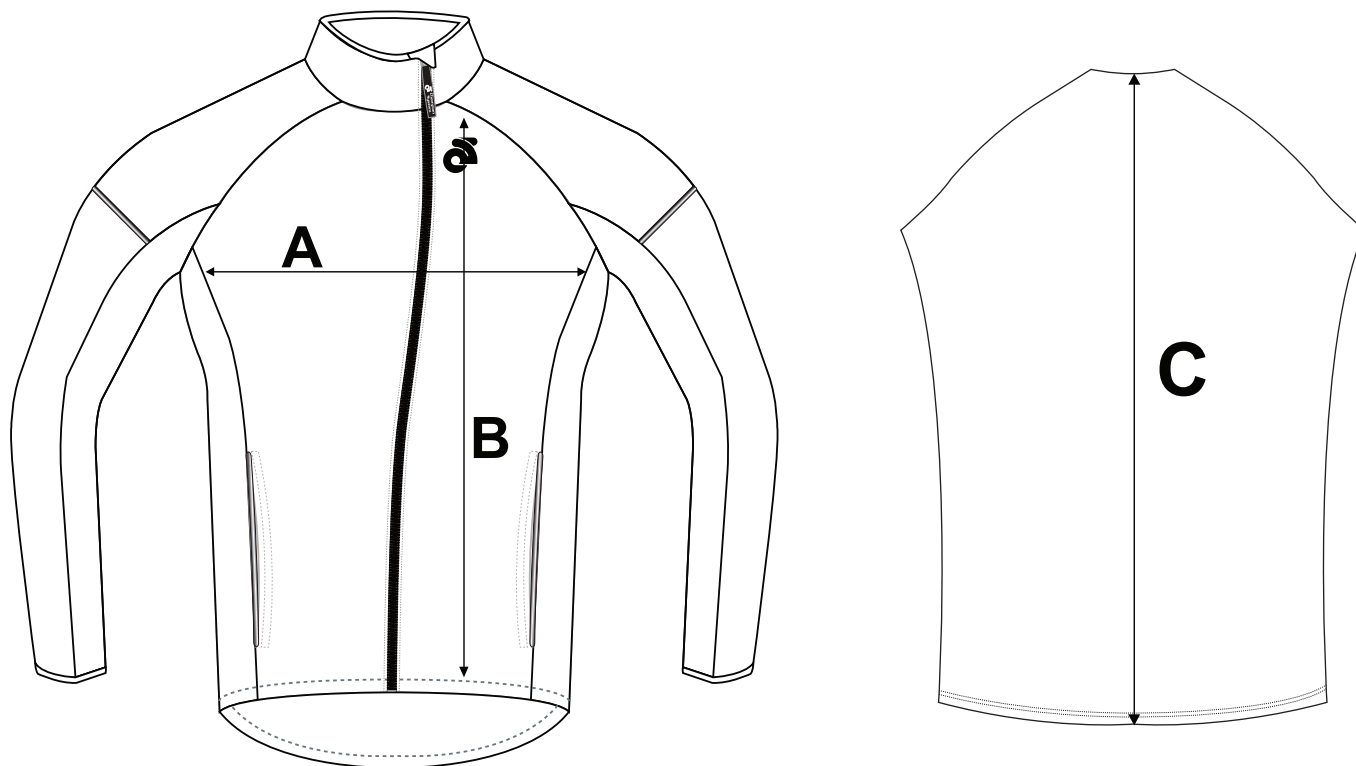


If you're unsure which size to buy, try measuring a tech fleece jacket that you already own that fits you well, and compare those measurements to the size chart. Lay the tech fleece jacket on a flat surface and use the above guide to measure the tech fleece jacket.

Note: All measurements are approximate.

Size	A (Chest)	B (Front Length)	C (Back Length)
S	20 1/2"	26 1/4"	25 7/8"
M	21 1/2"	27 1/2"	27"
L	22 1/2"	28 3/4"	28 1/8"
XL	23 1/2"	30"	29 1/4"
2XL	24 1/2"	31 1/4"	30 3/8"
3XL	25 1/2"	32 1/2"	31 1/2"



If you're unsure which size to buy, try measuring a tech fleece jacket that you already own that fits you well, and compare those measurements to the size chart. Lay the tech fleece jacket on a flat surface and use the above guide to measure the tech fleece jacket.

Note: All measurements are approximate.

Size	A (Chest)	B (Front Length)	C (Back Length)
XS	16 3/4"	20 3/8"	24 3/4"
S	17 3/4"	21"	25 1/2"
M	18 3/4"	21 5/8"	26 1/4"
L	19 3/4"	22 1/4"	27"
XL	20 3/4"	22 7/8"	27 3/4"
2XL	21 3/4"	23 1/2"	28 1/2"
3XL	22 3/4"	24 1/8"	29 1/4"
4XL	23 3/4"	24 3/4"	30"